

Believe in
children



Barnardo's
Northern Ireland

TODAY

I go to find...

.....



TODAY

I feel...



ANGRY?

HAPPY?



SAD?



CONFUSED?



TODAY

I got here by...

Circle the way you travelled here.



DRAW

a picture of where you are...



I have come to find...

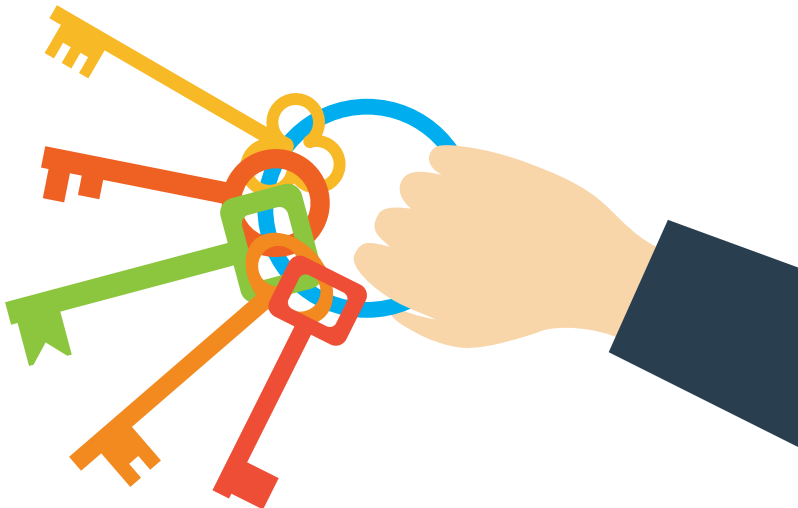


Draw who you have come to find in the frame above.

Sometimes I meet a dog
and he is friendly.



The people who have the keys and
are in uniform are friendly too.



I found my
way to you!

I counted steps on my way.



Just for fun...

Try and find all the animals hidden in this word search.

ANIMALS

G E S U O M H N W R B W C W L
X D A Q H J X O O M L T H W J
B W S H N L H T P I C R A W M
Y W M E F F A R I G L K D O G
R C K R R R S Y K T H I P P O
J T O W I E F B X X L Q R J E
D R O T A G I L L A E B Z H X
T H N X P I C L F C R V Z S Z
V N H R S T H E T D R I B I Q
N Z A C S T Y X L W I N H F L
W U Q H K L J A E A U F A H F
V Q Q D P O Y K N V Q Z A T V
X M T L Q E T J Y E S Y R C H
T A C K Q C L K M O N K E Y R
P T S H W L Y E T D R A H T L

CAT

DOG

BIRD

ELEPHANT

HIPPO

SQUIRREL

GIRAFFE

FISH

MOUSE

MONKEY

ALLIGATOR

LION

TIGER